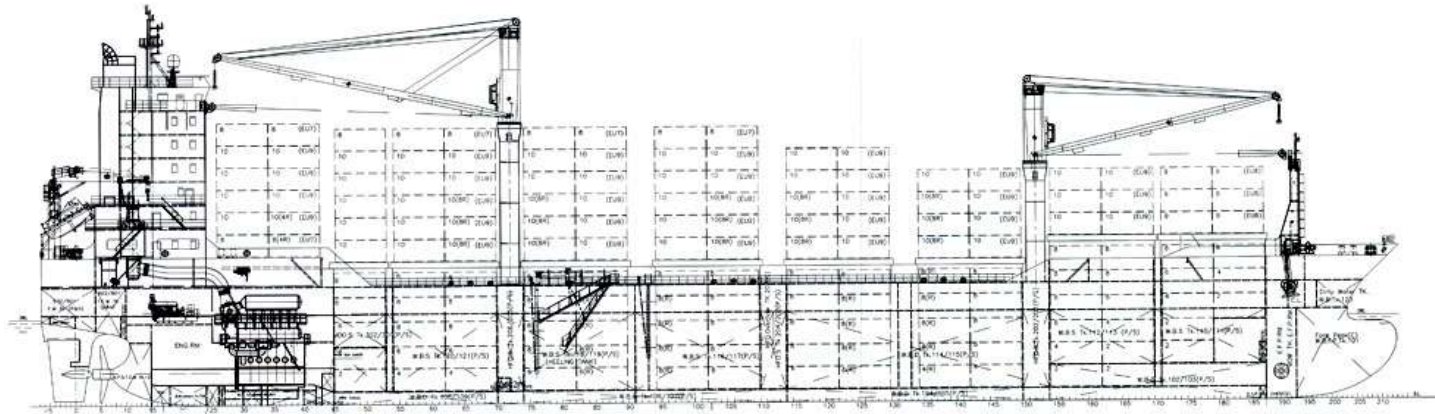




Hermann Lohmann Reedereien  
GmbH & Co. KG  
Ship Management



**Name** THEODOR  
**Shipyard** SHANDONG PROVINCE WEIHEI SHIPYARD, CHINA  
**Built** 12/2006  
**Type** CONTAINER – GEARED – ENGINE / BRIDGE AFT

**Classification** GL +100 A5 E3, IW, BWM-F, CONTAINERSHIP + MC  
 AUT E3 EQUIPPED FOR CARRIAGE OF DANGEROUS  
 GOODS (SOLAS II-2, REG. 19)

**Main Dimensions**

Length over all 161,35 m  
 Length between perpendiculars 151,35 m  
 Breadth moulded 25,00 m  
 Draught moulded 9,90 m  
 Air Draught (max. draught) 37,20 m  
 Depth to maindeck moulded 13,90 m

**Deadweight (about)** 17000 dwt

**Measurement**

GT/NT 15633 / 6717  
**Service-Speed** (bft 2, even keel) 19,50 kts  
**Main Engine**  
 2 STROKE MAN B&W 6S60MC-C – 13.560 kW  
**Propeller** Fixed

**Consumption at sea** fully laden abt 52,00 mts / 19,5 kn

**Consumption in port** day idle

- IDLE, NO CRANES, NO REEFERS :abt 3,50 MT
- TWO CRANES WORKING, NO REEFERS :abt 5,20 MT
- TWO CRANES WORKING, 50 REEFERS :abt 7,00 MT
- TWO CRANES WORKING, 100 REEFERS: :abt 9,20 MT
- NO CRANES WORKING, 100 REEFERS :abt 7,50 MT
- TWO CRANES WORKING, 250 REEFERS: :abt 15,20 MT
- NO CRANES WORKING, 250 REEFERS :abt 13,50 MT

**Auxiliary engines**

3 x Diesel Gen. Sets, each 1120 kW  
 1 x Diesel Gen. Set, 250 kW  
 Bowthruster abt. 800 kW  
 258 Reefer plugs wereof 126 in hold and 132 on deck, 440/32A/60 Cycles

**Cranes:**

2 MacGregor Cranes (located midships) each 40 mt SWL  
 No 1 max 28m outreach  
 No 2 max 35m outreach  
 Hoisting speed: variable up to 34m /min with SWL 18 mt for quick & fast operation.

**Tank capacities:**

Ballast 8053 m<sup>3</sup>  
 LFO 1600 m<sup>3</sup>  
 MGO 150 m<sup>3</sup>  
 Potable water 273 m<sup>3</sup>

**Cargo capacity**

4 Holds divided in 8 Compartments / 8 Hatches with 16 Hatchcovers  
 Hatch no 1: 12,48 m x 15,88 m  
 Hatch no 2-7: 12,48 m x 20,56 m  
 Hatch no 8: 6,56 m x 20,56 m

Pontoon type hatch covers. Hatch covers are longitudinally divided for non-sequential opening and bay-wise operation.

Max weight of hatch cover: abt. 31 mt

**Container intake acc. To IMO Reg.(8'/8'6"):**

Pos / Size	20'	40'	+20'
Deck	876	409	58
Hold	492	226	40
<b>Total</b>	<b>1368</b>	<b>635</b>	<b>98</b>

**Container Stackweights (mt)**

Pos / Size	20'	40'
Hatch covers	60	120
Hatch covers	60	104
Poopdeck	70	120
Tanktop	120	150

**Over Sizes Containers:**

Vessel is equipped for 45' containers and wide bodies on deck on top of 40' containers in accordance with the onboard manual for stowage/lashing of containers approved by class.

All above container intakes are max. intakes always subject to vessels stability / trim / Deadweight / Perm. Stress / Perm. Stackweights, Container Lashing plan and Deadweight / Bunkers on board and IMO Regulations of visibility. Panama and Suez Canal or other local regulations may also require other visibility angle decreasing intakes.

**Fittings:**

Fully Cellularized in Holds

Details are given in good faith, believed to be correct, but without guarantee. All figures to read "about" and not to be used for T/C-descriptions Speed basis max. beaufort 2, no swell and no adverse currents. Any Days during which the vessel encounters conditions exceeding these weather conditions are expressly excluded regarding performance evaluation.