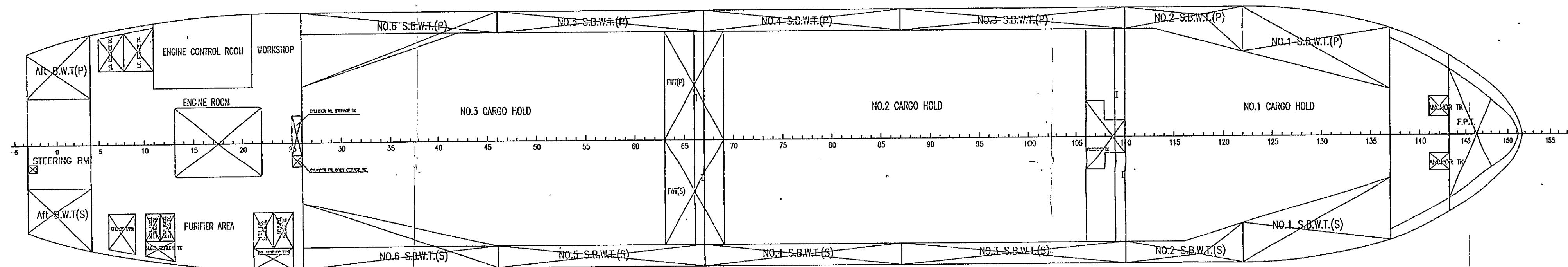
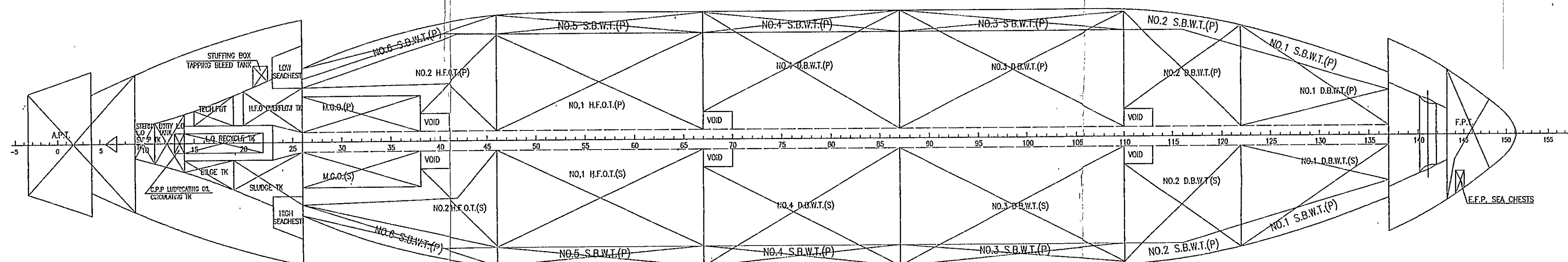


IN HOLDS



TANK TOP



MAIN DIMENSIONS

LENGTH OVER ALL	~108.40m
LENGTH BETWEEN PERPENDICULARS	103.90m
BREADTH MOULDED	18.20m
DEPTH MOULDED	9.00m
DRAUGHT DESIGN	5.50m
DRAUGHT SCANTL.	6.65m
DEADWEIGHT (at d=6.65 m)	7600DWT
MAIN ENGINE	MAN B&W 7S26MC 1set
SERVICE SPEED	12.4 Knots
at designed draft with 90%MCR	
COMPLEMENT	13P

完工
FINISHED

				7600DWT 散货轮		Q84.4194.101-009	
				进坞图			
				DRY DUCKING PLAN			
标记	数量	修改单号	签字	日期	质量	数量	比例
设计	芮光						1:500
校对	桂景林				共 2 页		第 1 页
审核	张剑				江苏东方造船有限公司		
标检							

