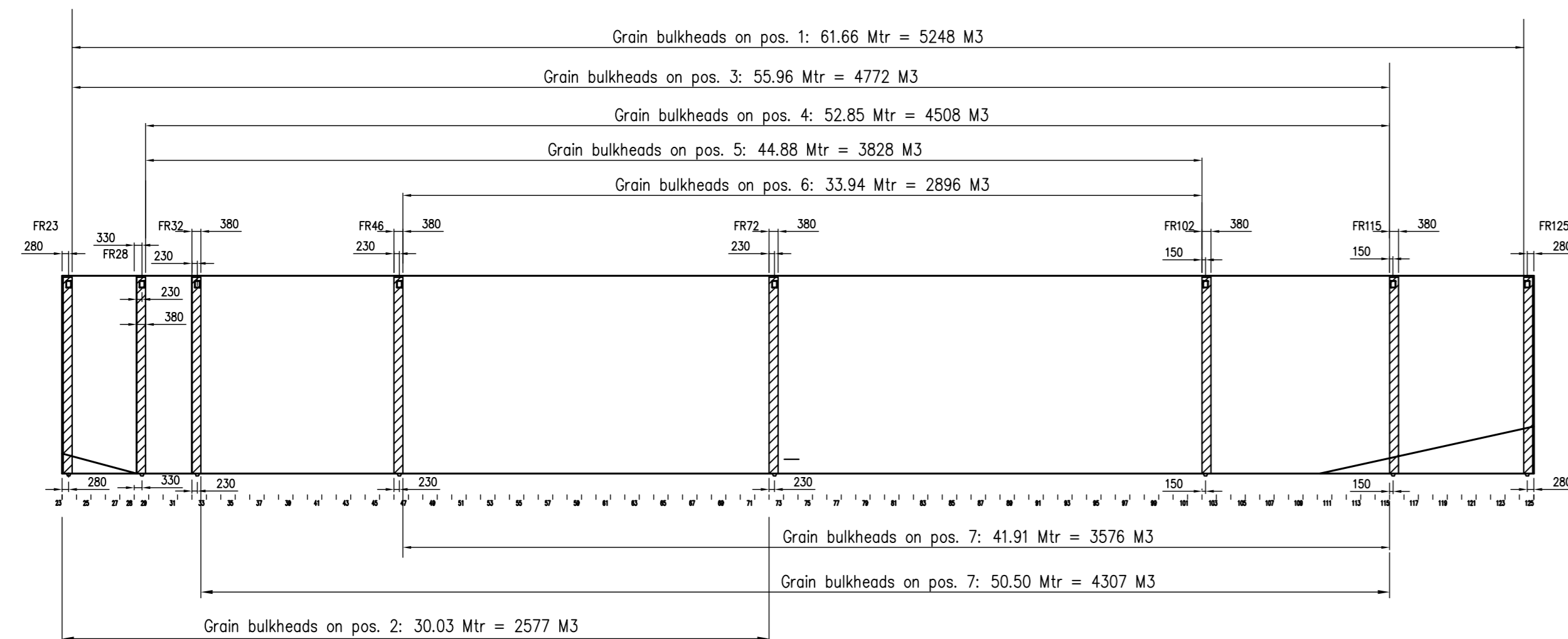
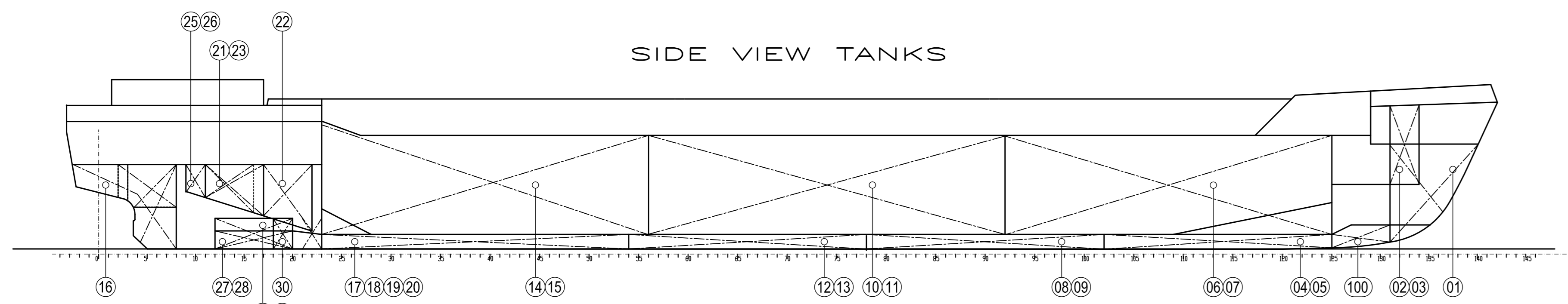


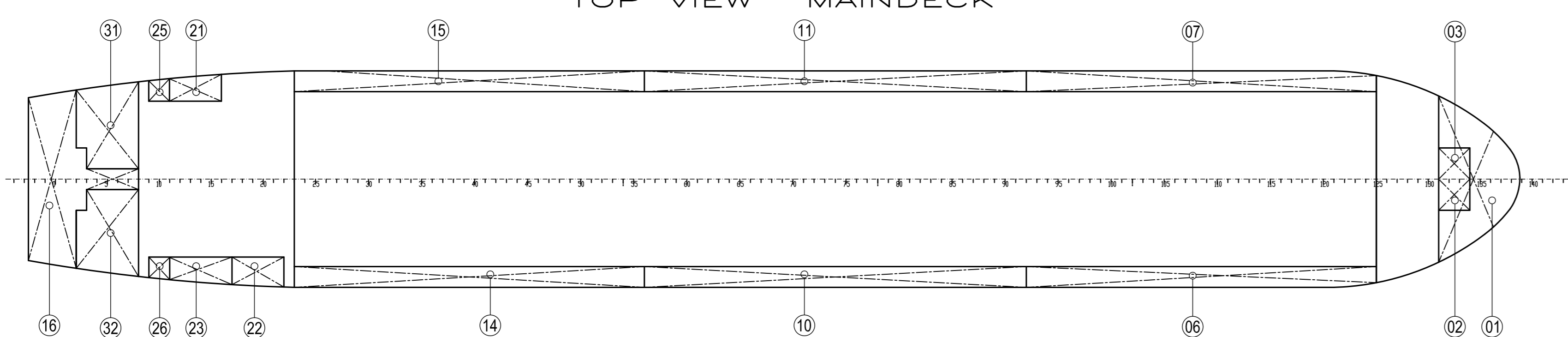
HOLD CAPACITY



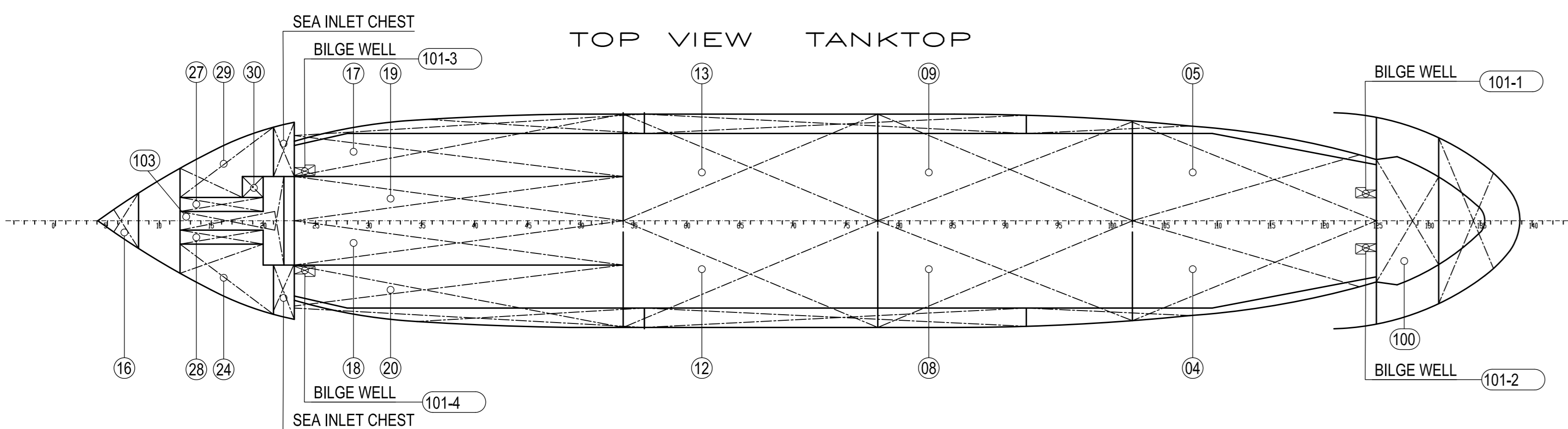
SIDE VIEW TANKS



TOP VIEW MAINDECK



TOP VIEW TANKTOP



COMPARTMENT	VOLUME [M³]	S.W. [TON/M³]	WEIGHT [TONS]	COMPARTMENT	VOLUME [M³]	S.W. [TON/M³]	WEIGHT [TONS]
01 Waterballast Fore Peak	111.515	1.025	114.303	21 Lubrication Oil Main Engine	6.667	0.90	6.000
02 Chain Locker SB	15.563	1.025	15.952	22 Fuel Oil Settling Tank	11.735	0.90	10.562
03 Chain Locker PS	15.563	1.025	15.952	23 Fuel Oil Day Tank	6.446	0.90	7.602
04 Waterballast DB SB	49.407	1.025	50.542	24 Fuel Oil Overflow Tank	14.684	0.90	13.198
05 Waterballast DB PS	49.407	1.025	50.542	25 Lubrication Oil Aux Engine	1.850	0.90	1.734
06 Waterballast WT SB	122.618	1.025	125.684	26 Gas Oil Tank	1.853	0.89	1.655
07 Waterballast WT PS	122.618	1.025	125.684	27 Dirty Oil Tank	4.095	0.90	3.685
08 Waterballast DB SB	73.495	1.025	75.333	28 Sludge tank	4.095	0.85	3.890
09 Waterballast DB PS	73.495	1.025	75.333	29 Sewage Tank	12.081	1.0	12.081
10 Waterballast WT SB	159.476	1.025	163.463	30 Coolerwater Drain Tank	2.583	1.0	2.583
11 Waterballast WT PS	159.476	1.025	163.463	31 Freshwater PS	27.677	1.0	27.677
12 Waterballast DB SB	73.715	1.025	75.608	32 Freshwater SB	27.677	1.0	27.677
13 Waterballast DB PS	73.715	1.025	75.608	100 Void Space foreship			
14 Waterballast WT SB	133.626	1.025	136.966	101-1 BilgeWell PS FS			
15 Waterballast WT PS	122.085	1.025	125.137	101-2 BilgeWell SB FS			
16 Waterballast AR Peak	55.442	1.025	56.828	101-3 BilgeWell PS AS			
17 Fuel Oil DB PS	44.899	0.90	40.409	101-4 BilgeWell SB AS			
18 Fuel Oil DB SB	42.926	0.90	38.633	103 Void Space aftship			
19 Fuel Oil DB PS	42.926	0.90	38.633				
20 Fuel Oil DB SB	44.899	0.90	40.409				

CONTAINER CAPACITY

LAYER 5	28 TEU
LAYER 4	40 TEU
LAYER 3	39 TEU
LAYER 2	39 TEU
LAYER 1	35 TEU

DIMENSIONS:

HOLD

FR.23-125 = 62.52 x 10.12 Mtr

HATCHES HOLD

62.84 x 10.39 Mtr

LOADING CAPACITY:

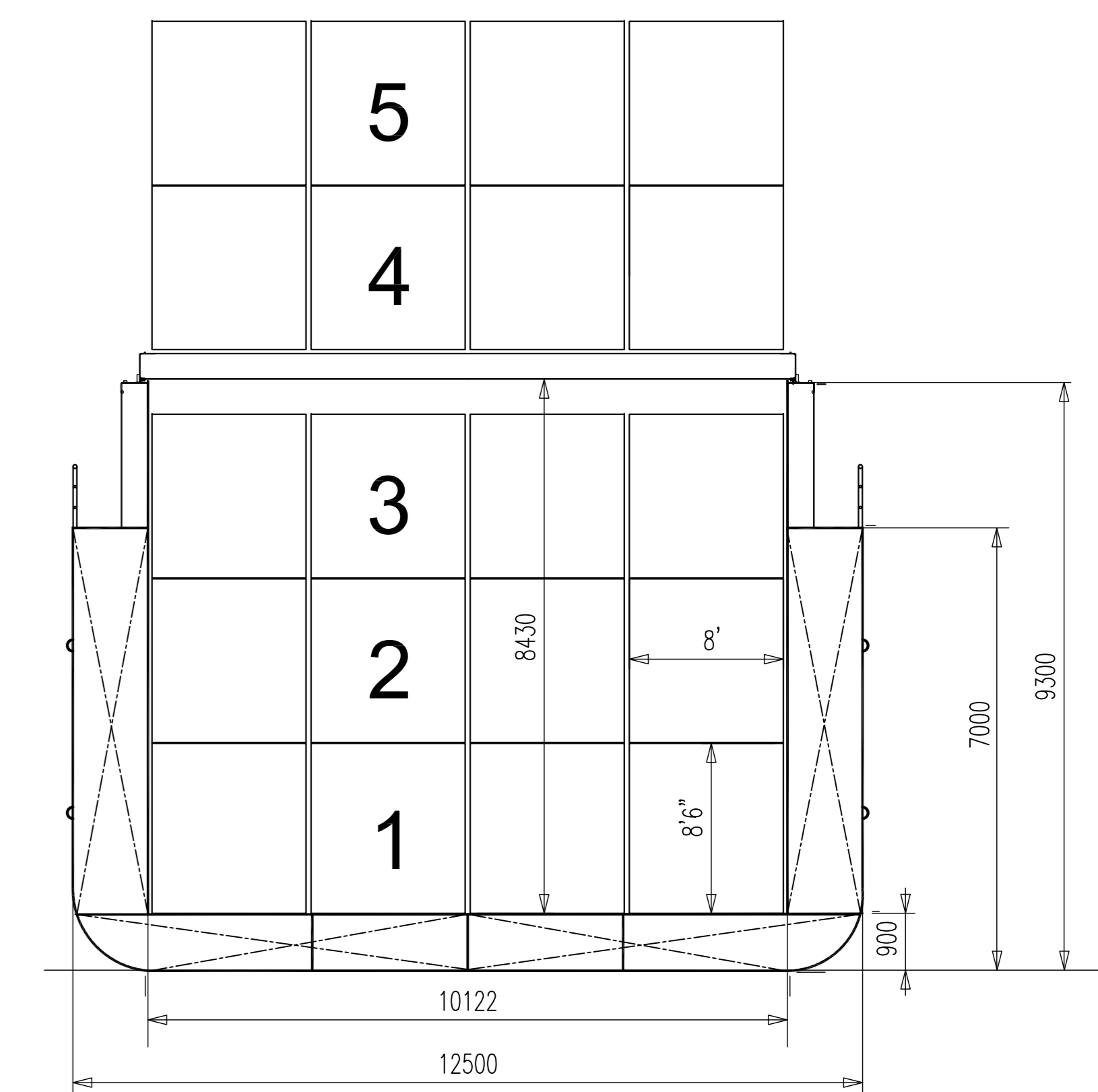
HOLD	15 TON/M2
HATCHES	1.6 TON/M2

MAX. STACKLOAD CONT.:

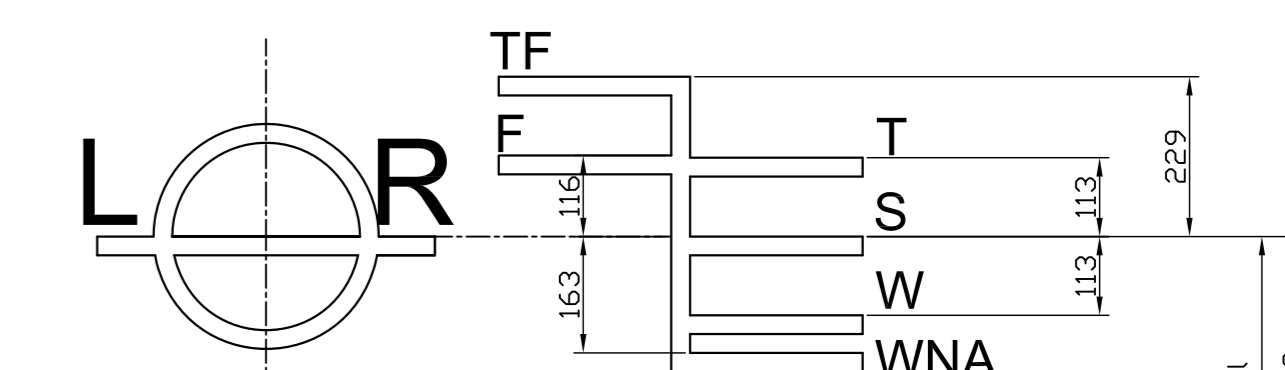
HOLD	20 FT.= 60 TON
	40 FT.= 75 TON
HATCHES	20 FT.= 23 TON
	40 FT.= 40 TON

WEIGHT GRAINBULKHEAD:

12 TON EACH



DRAUGHT	DISPLACEMENT				TRIM		DEADWEIGHT		DRAUGHT
	UNDERSIDE KEEL	FRESH WATER	SALT WATER	MOMENT TO CHANGE TRIM 1 cm	FRESH WATER	SALT WATER	UNDERSIDE KEEL		
METRES	TON	TON	TON	TM	TON	TON	METRES		
		4900				3700			
			4900				3700		
		4700				3500			
			4700				3500		
		4500		69		3300		5.000	
			4500				3300		
		4300				3100			
			4300				3100		
		4100		67		2900		4.500	
			4100				2900		
		3900				2700			
			3900				2700		
		3700		65		2500			
			3700				2500		
		3500				2300			
			3500				2300		
		3300		61		2100		4.000	
			3300				2100		
		3100		59		1900			
			3100				1900		
		2900		57		1700		3.500	
			2900				1700		
		2700		53		1500			
			2700				1500		
		2500		51		1300			
			2500				1300		
		2300		49		1100		3.000	
			2300				1100		
		2100				900			
			2100				900		
		1900		47		700		2.500	
			1900				700		
		1700				500			
			1700				500		
		1500		45		300		2.000	
			1500				300		
		1300		43		100			
			1300				100		
		1100		41					
			1100						



PRINCIPAL DIMENSIONS CF3850

Length o.a.:	88.60 m
L opp:	84.99 m
B moulded:	12.50 m
Depth to maindeck:	7.00 m
Draft, ballast:	3.20 m
Draft, max:	5.40 m
Deadweight at 5.40 m approx:	3850 ton

Tonnage about:	2400 GT
Class:	LRS, +100A1, +LMC, UMS NSI, 0-mans watch.

Ship/name

Ship-owner

rev.	date	inspected	
A	05/07/02	JANMAR	
P.O. box 7 8200 AA BERGUM HOLLAND			TEL: +31 (0) 511 467222 FAX: +31 (0) 511 464259 EMAIL: engineering@damen-bergum.nl
CAPACITY PLAN OOSTERSTRAAT 9333			
drawn: HHH		date: 25-09-00	
scale: 1:200		ident. to draw. no.:	
prj. no.: 9333		derived fr. draw. no.: 9342-110-150	
yard no.:		derw. no.: 9333-110-150A	
COPYRIGHT BY DAMEN SHIPYARDS BERGUM			