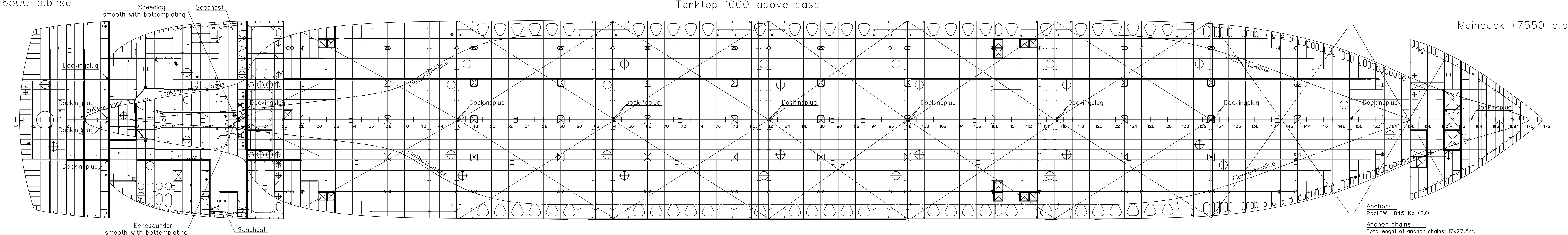


Accommodationdek Tweendeck 3560 a.base
+6500 a.base

Tanktop 1000 above base

Maindeck +7550 a.base



Anchor:
Pool TW 1845 Kg (2X)

Anchor chains:
Total length of anchor chains: 17x27.5m.
Type of anchor chains: 38mm U3.

Propeller:
Diameter of propeller: 3200mm.
Total weight of propeller (hub-blades): 6793 KG.
Weight of 1 blade: 668 KG.
Weight of hub: 4121 KG.
Number of blades: 4

Propeller shaft:
Weight of propeller shaft: 2297 KG.
Length propeller shaft: 3992mm.

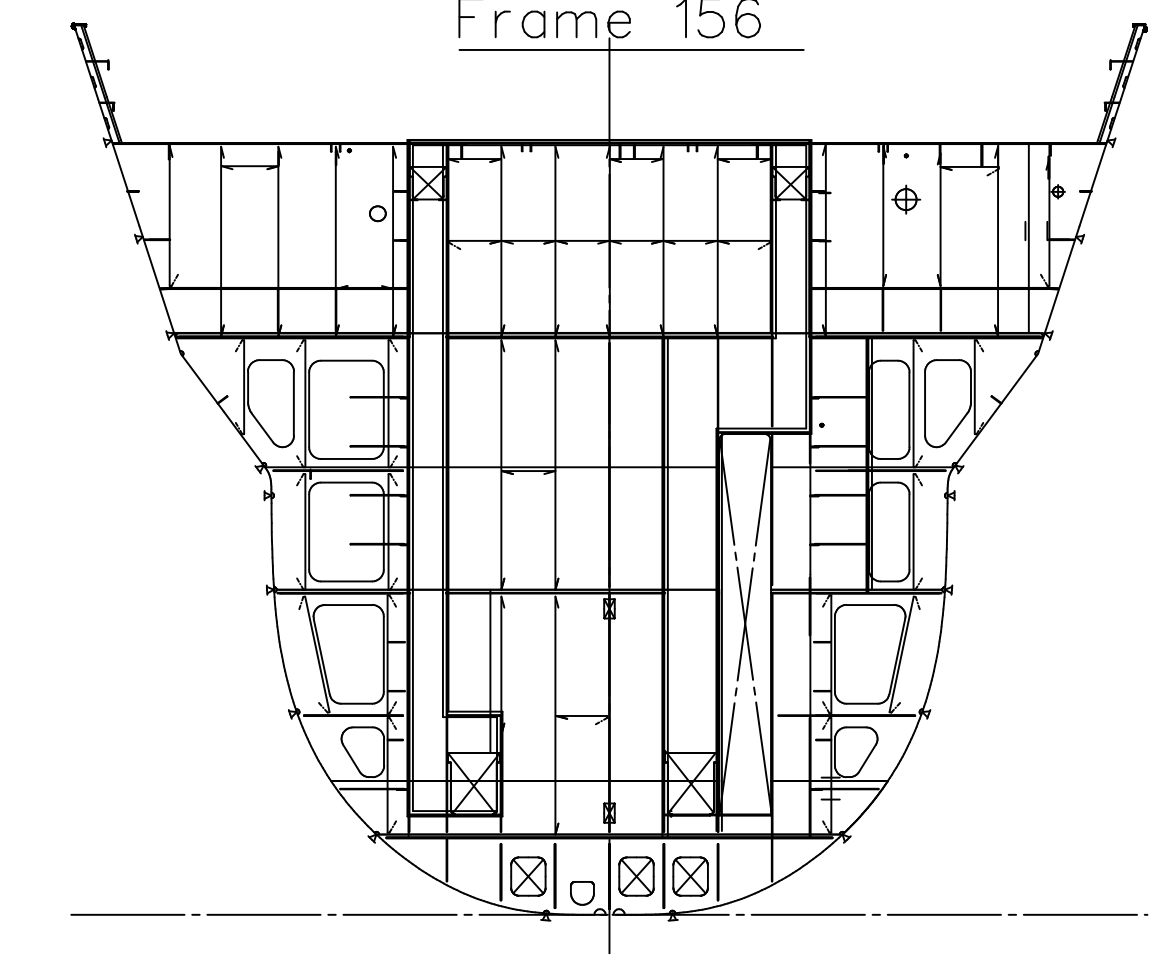
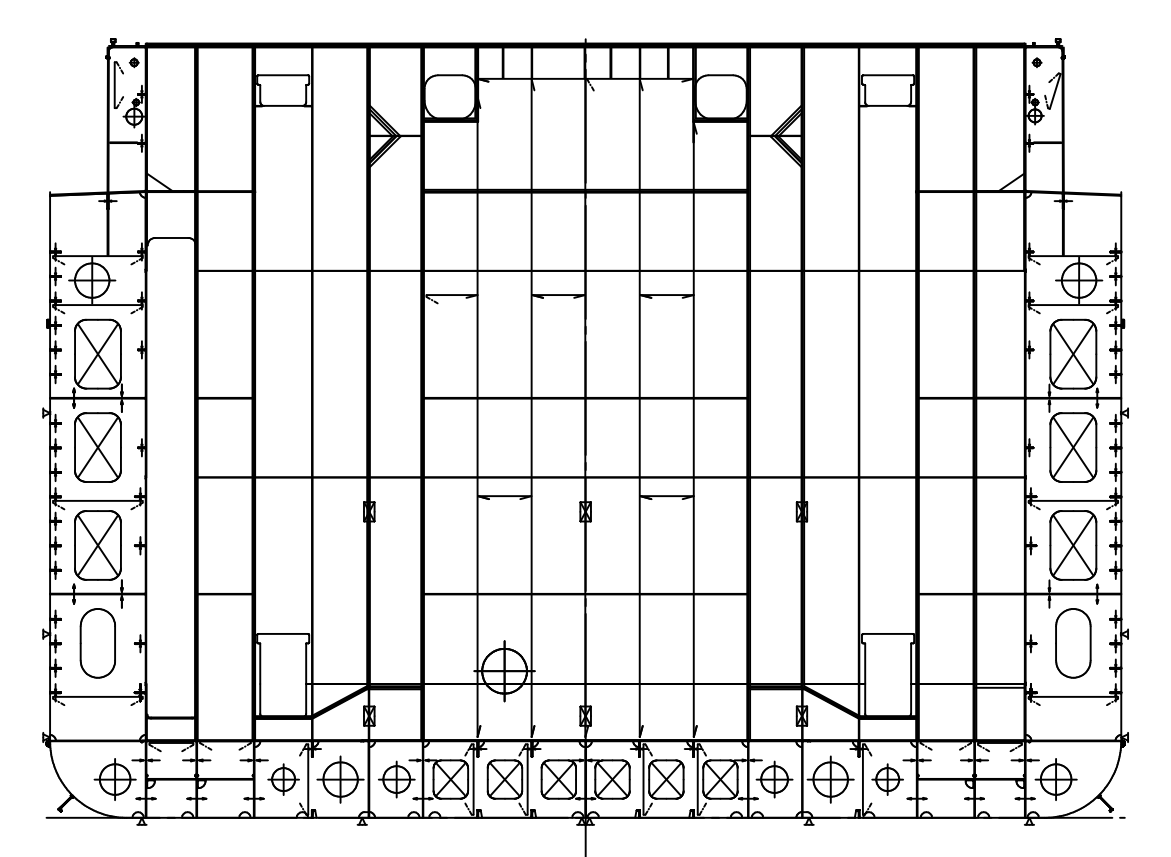
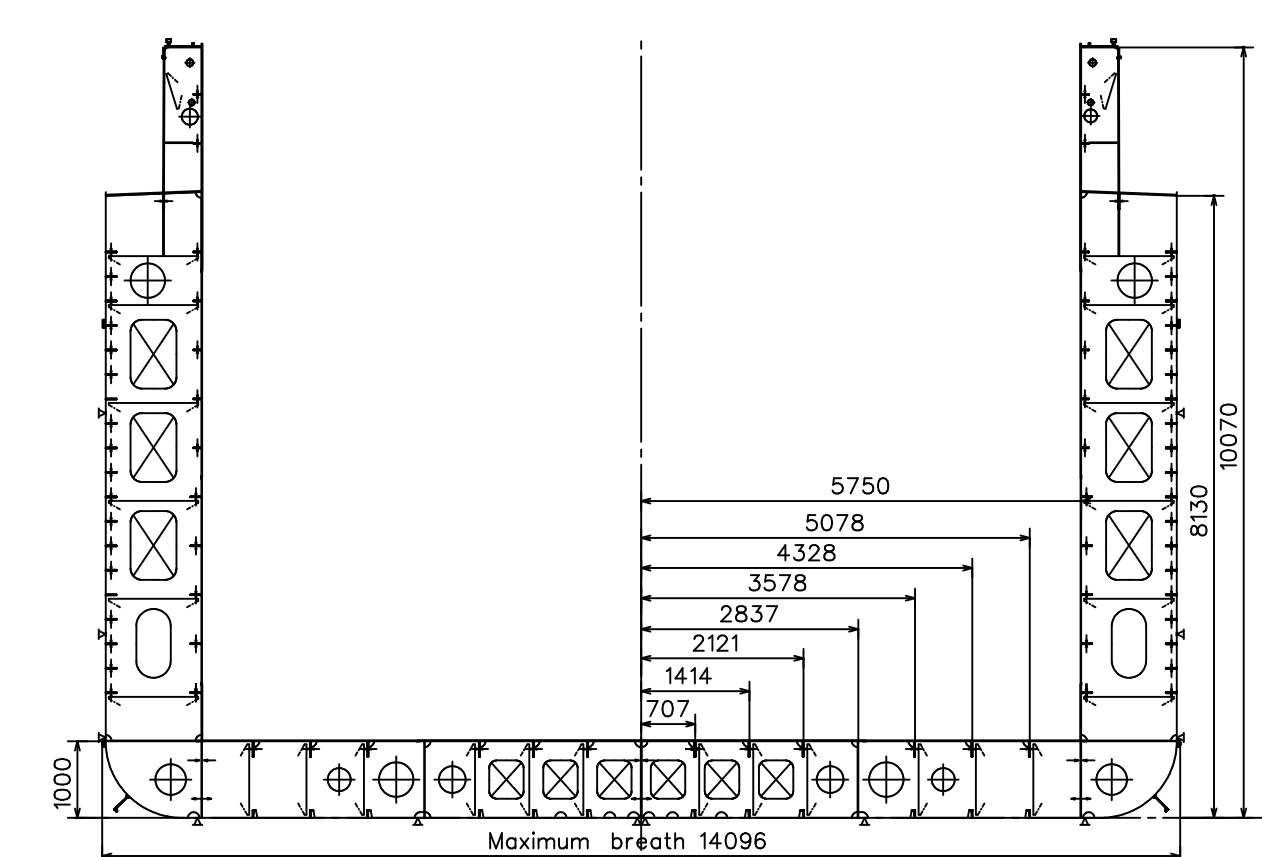
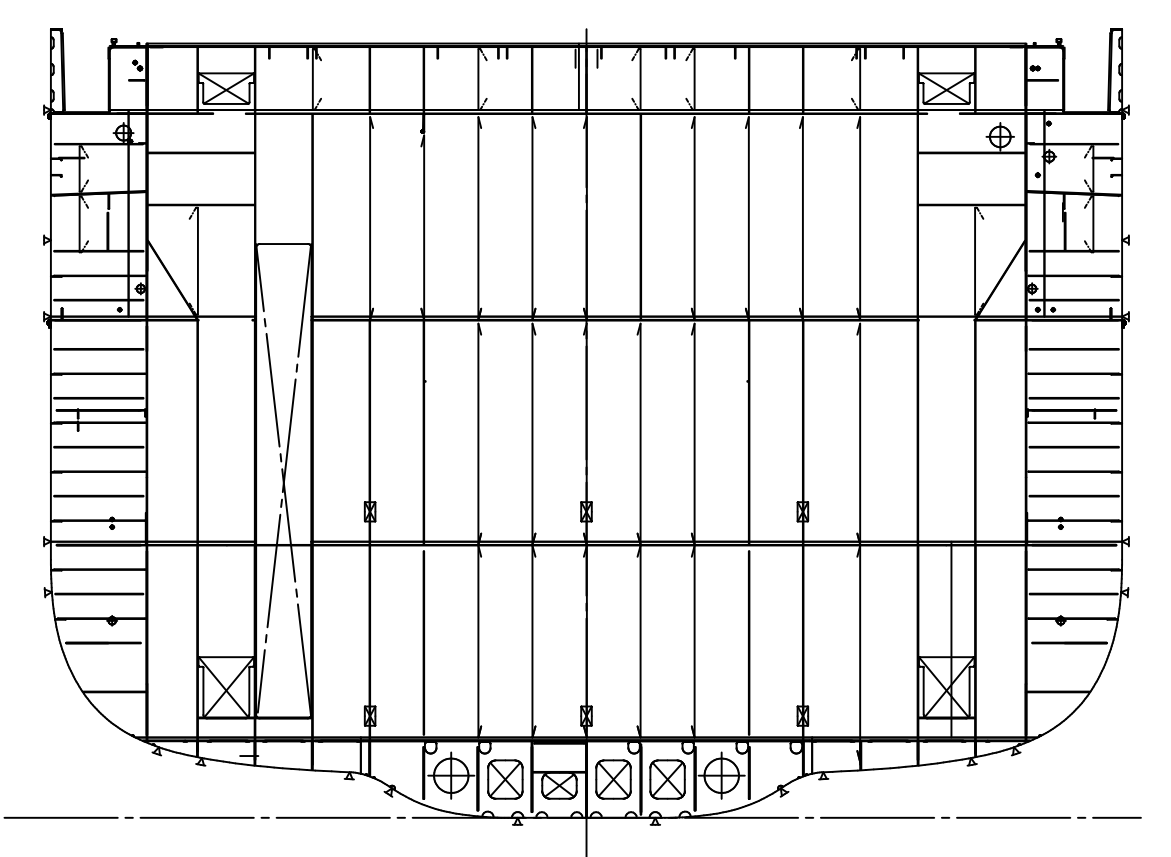
Electric shore power:
3X400V, 50Hz, 125A
35m connecting cable incl. 125 Amp CEE-plug.
Connection location: Engineer's workshop
in mainwithboard

Frame 26

Parallel midship

Frame 109 & 111

Frame 156



CLASS NOTATION
BUREAU VERITAS I + HULL + MACH
General cargo ship / Container ship
Unrestricted navigation
FINNISCH SWEDISCH ICE CLASS 1A

NOTES:
- Frame numbers welded on bilgekeel and shell.
every 10th frame, starting at frame 10 including frame 26 and 156

Main particulars:

Loa 110.78m
Lpp 105.142m
B mid 14.00m
T max 6.05m
H 8.13m
Deadweight 6000t

DATE	OWNER		
	N.S.I.		
	CLASS.		
APPROVED BY:		DATE	ALT.
	SHIPYARD FERUS SMIT B.V. WESTERBROEK		
	P.O. Box 147 Tel: 050-454255 9600 AC NOOZDIJND New 7700 FERUS NL THE NETHERLANDS Tel: 050-454250		
	Docking plan		
DATE	DRAWN	YARD NO	6000 TON
SCALE 1:100	CHECKED	DRWG. NO	62002-8
	COPYRIGHT BY SHIPYARD FERUS SMIT B.V.		