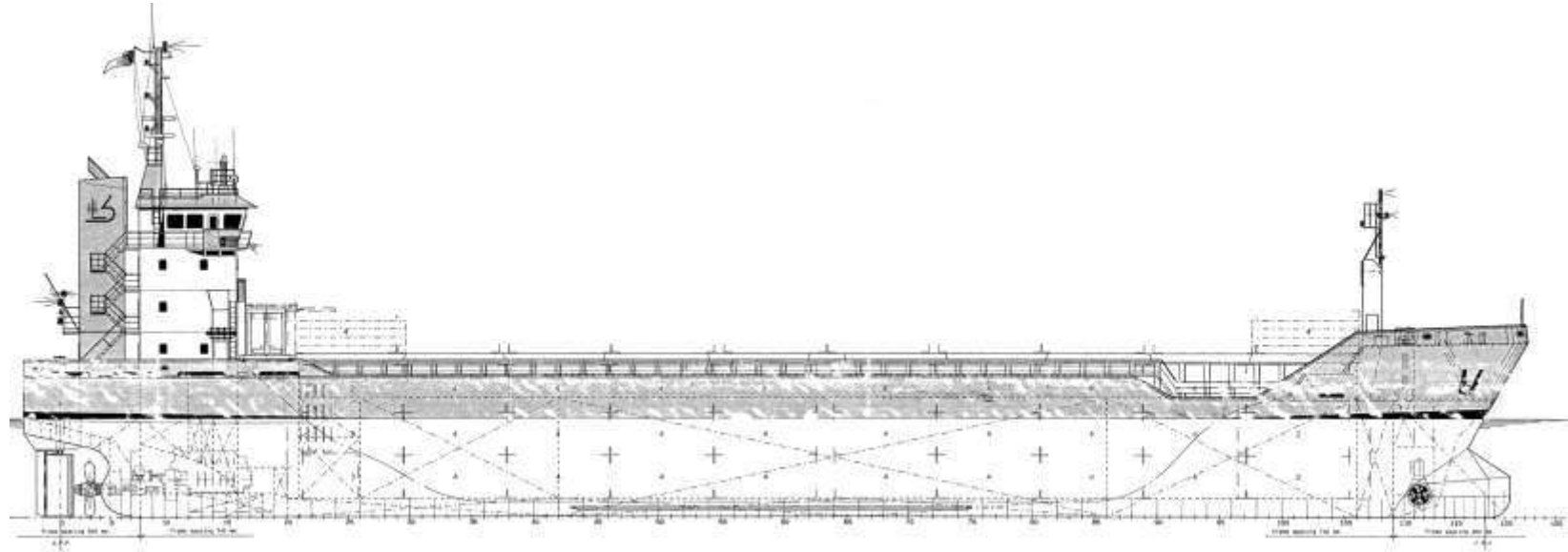




Hermann Lohmann Bereederungen
GmbH & Co. KG
Ship Management



Name LISA (IMO 9235505) – Cy Flag
Shipyard Volhardingen Shipyard, Hoogezeand, NL
Built 2001
Type gearless singledecker
Classification GL + 100 A5 E G General Cargo Ship,
Strengthened for Heavy Cargo
equipped for the carriage of container
+ MC AUT
SOLAS II-2 reg. 19

Main Dimensions

Length over all	89,75	m
Length between perpendiculars	84,98	m
Breadth moulded	13,60	m
Draught moulded	6,37	m
Air Draught (incl. draught)	29,30	m
Depth to maindeck moulded	7,20	m
Clear height in hold	8,35	m

Deadweight (about)

at 6,37m draught (summer)	4.885	tdw
at 6,42m draught (winter)	4.737	tdw

Measurement

GT/NT	2.829 / 1.548
-------	---------------

Service-Speed (bft 2, even keel)	10,00	knts
---	-------	------

Main Engine

1 of MAK		
6M25 - Rated power	1800	kW

Propeller	1 x CPP	
------------------	---------	--

RPM	750	
------------	-----	--

Consumption at sea IFO180/MGO/day fully laden	5,80 / 0,20	mts
--	-------------	-----

Consumption in port MGO/day idle	0,50	mts
---	------	-----

Reduction gear

1 reduction gear

Auxiliary engines

2 Diesel generator sets, SCANIA DS9 135 kw-50Hz
1 emergency/harbour generator set type SISU, 110 kVA-50Hz
2 starting air compressors
3 Separators: 1x IFO, 1x MGO, 1x Luboil
1 Fuel oil trim pump
1 bilge water separator, acc. to Marpol regulations
2 bilge/ballast pumps, each 150 m³/hr a 2,80 bar
1 Fire Fighting pump
1 sewage pump
1 freshwater pressure set
1 CO₂ Fire Fighting system for engine room and cargo hold

Bowthruster

3 Steps	225 kW
---------	--------

Tank capacities

Ballast	1674,00 m ³
IFO	140,00 m ³
MGO	216,00 m ³
Potable water	53,60 m ³

Cargo capacity

Boxshaped hold narrowing fore and aft; see separate drawing
Hold (grain) 5498 m³
Dimensions cargo hold l x w x h 62,88 x 11,00 x 8,35 m
Square meter capacity tanktop/hatch 15,00 / 1,60 mts

Steering Gear

Electrical hydraulic steering gear

Anchor and moving winches

1 electrical driven bow anchor winch with two warping heads
1 electrical driven capstan aft

Deck layout

Rudder, Becker type
Container fittings on tanktop and on hatch covers
Lashing eyes in hold and outside of coaming
Moveable grain bulkhead (2 pcs) with 7 stowage positions

Weather deck hatch covers

Steel pontoon hatches with 1 gantry crane
Dimensions approx 62,70x10,10 m

Air change elec. driven	6 times
--------------------------------	---------

Container intake

In hold	111 TEU
On hatch	76 TEU
Total	187 TEU

Communication equipment

According GMDSS for Area A3, eMail-Terminal

Accommodation

For Captain and Crew of a total 10 persons with heating, ventilation and air-conditioning

Details are given in good faith, believed to be correct, but without guarantee.
All figures to read "about" and not to be used for T/C-descriptions Speed basis max.
beaufort 2, no swell and no adverse currents. Any Days during which the vessel encounters conditions exceeding these weather conditions are expressively excluded regarding performance evaluation.