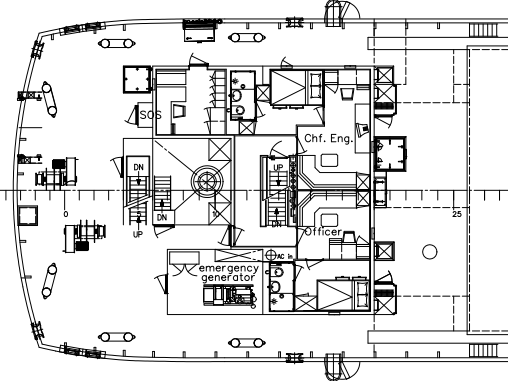
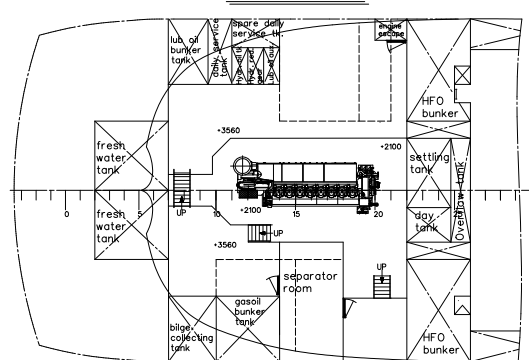


Separation Bulkhead 109/111

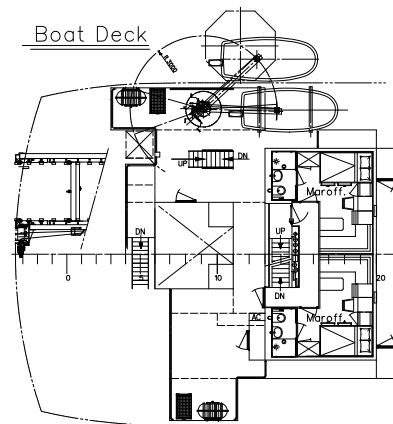
Raised Quarter Deck



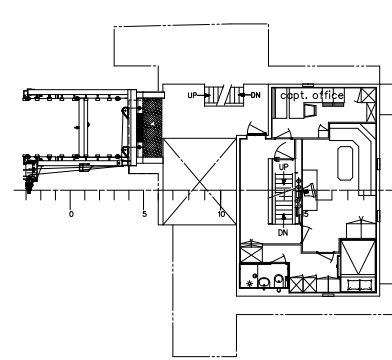
Tween Deck



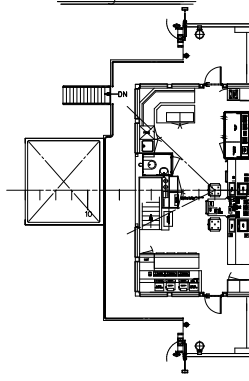
Boat Deck



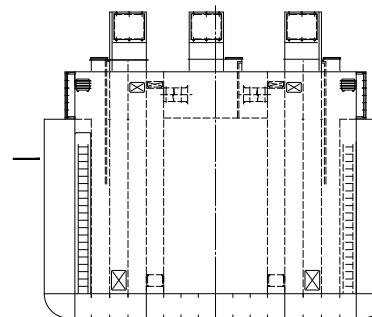
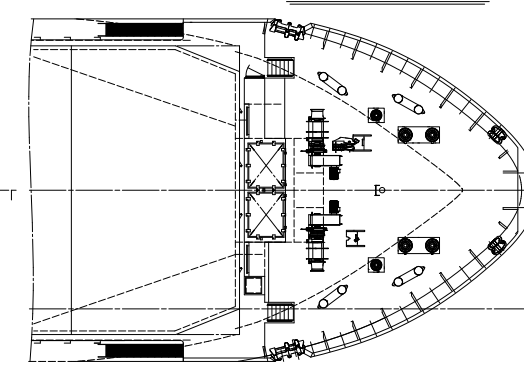
Captain's Deck



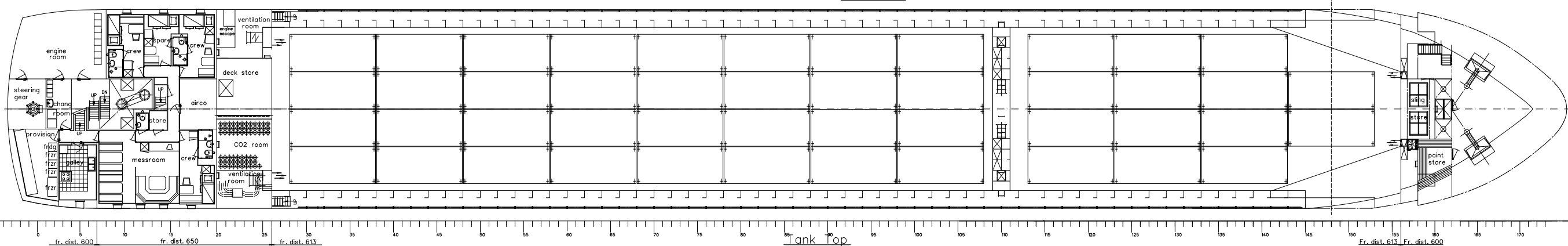
Bridge Deck



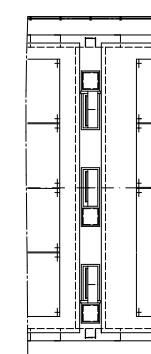
Forecastle Deck



Main Deck

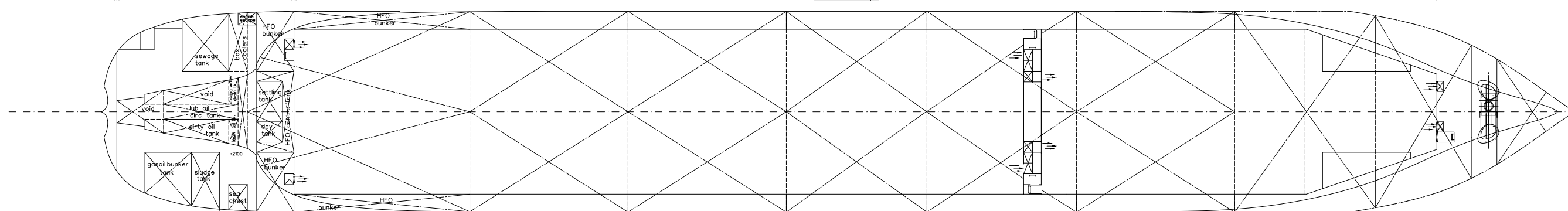


Coaming Bar



Main particulars:

Loa 110.78m
 Lpp 105.142m
 B mid 14.00m
 T max 6.51m
 H 8.13m
 Deadweight 6668t
 Hold volume 7946m³/280600cuft



1	VERDEPENG MAX. DEPKING (CONSHIP)	21-02-2019	MR
2	INVERSE DUREN ANKERPAST	21-12-2004	EB
3	KONINKRIJKE	21-12-2004	EL
4	INDIENING BRUGBOEK	22-9-2004	EL
5	UPDATED	3-9-2004	EL
6	ALTERATION		

COPYRIGHT CONSHIP INTERNATIONAL B.V. 2009 All rights reserved. This document or any part thereof may not be made public or distributed, copied or otherwise reproduced or stored in any form of any storage system, without the prior written consent of Conship International B.V. P.O. Box 6929 - GRONINGEN - THE NETHERLANDS			
CONSHIP INTERNATIONAL			
SHIPYARD FERUS SMT B.V. WESTERBROEK P.O. Box 147 8600 AC Westerbroek The Netherlands Tel. +31-550-4042555 Fax +31-550-4042500			
<i>General Arrangement</i> FS6000/HOB General cargo vessel			
YARD NO. 360-362,366-368,371,372,375,384,385,389	DATE 15-09-2003	DRAWN Brikman/Groenink	DRWG. NO. 62001-1
SCALE 1:100	CHECKED		
J.P.D.			